

GUIDE TUBE

Chrome-plated steel.

WORM SCREW WITH TRAPEZODIAL THREADING

AISI 303 stainless steel.

SLIDERS

Brass.

SLIDER CONNECTING INSERTS

Natural steel.

CLOSING END-CAPS

Polyamide based (PA) technopolymer.

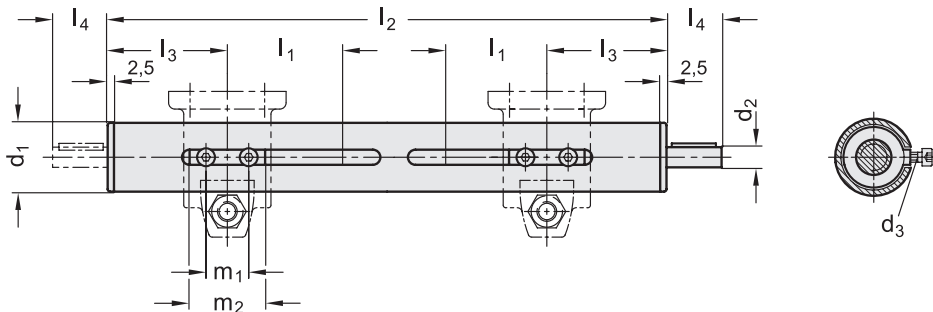
FEATURES AND APPLICATIONS

The assembly of GN 292 linear actuators can be made by using the different types of connecting clamps.

In order to measure the movement and fix the position of the sliders can be used the digital gravity position indicators DD52R (see page 764) and DD51 (see page 758).

SPECIAL EXECUTIONS ON REQUEST

- Linear actuators with different lengths.
- AISI 304 stainless steel guide tube linear actuators.
- Linear actuators with two separated worm screws.
- Linear actuators with worm screw projecting on both ends (GN 292-RL2).
- Guide tubes with laser-engraved precision graduations.



| Conversion Table 1 mm = 0.039 inch | |
|---------------------------------------|------|
| d1 | |
| mm | inch |
| 18 | 0.71 |
| 30 | 1.18 |
| 40 | 1.57 |
| 50 | 1.97 |

METRIC

| Code | Description | d1 | d2.7 | d3 | l1 (standr lengths) | Max. travel* | Shaft thread | l2 | l3 | l4 | m1 | m2 | Keyway DIN 6885 | |
|----------|-----------------------|----|------|----|---------------------------|-----------------|-----------------|------|-------|----|----|----|--------------------|------|
| GN.66901 | GN 292-18-120-RL1-SCR | 18 | 6 | M3 | 120 | 167 | TR10x3 | 411 | 70 | 16 | 17 | 24 | A2x2x12 | 440 |
| GN.66906 | GN 292-30-130-RL1-SCR | 30 | 8 | M4 | 130 | 601 | TR14x4 | 513 | 102.5 | 16 | 23 | 38 | A2x2x12 | 1250 |
| GN.66911 | GN 292-40-205-RL1-SCR | 40 | 12 | M5 | 205 | 753 | TR20x4 | 709 | 117.5 | 17 | 42 | 54 | A4x4x12 | 3560 |
| GN.66916 | GN 292-40-255-RL1-SCR | 40 | 12 | M5 | 255 | 753 | TR20x4 | 809 | 117.5 | 17 | 42 | 54 | A4x4x12 | 3700 |
| GN.66921 | GN 292-50-300-RL1-SCR | 50 | 12 | M6 | 300 | 748 | TR20x4 | 909 | 120 | 18 | 42 | 54 | A4x4x12 | 6400 |
| GN.66926 | GN 292-50-350-RL1-SCR | 50 | 12 | M6 | 350 | 748 | TR20x4 | 1009 | 120 | 18 | 42 | 54 | A4x4x12 | 6700 |

* Executions available on request up to the maximum travel indicated.